



ARCADIA REPTILE



PRODUCT DATA SHEET

RARTP8S

SHADE DWELLER PRO T5

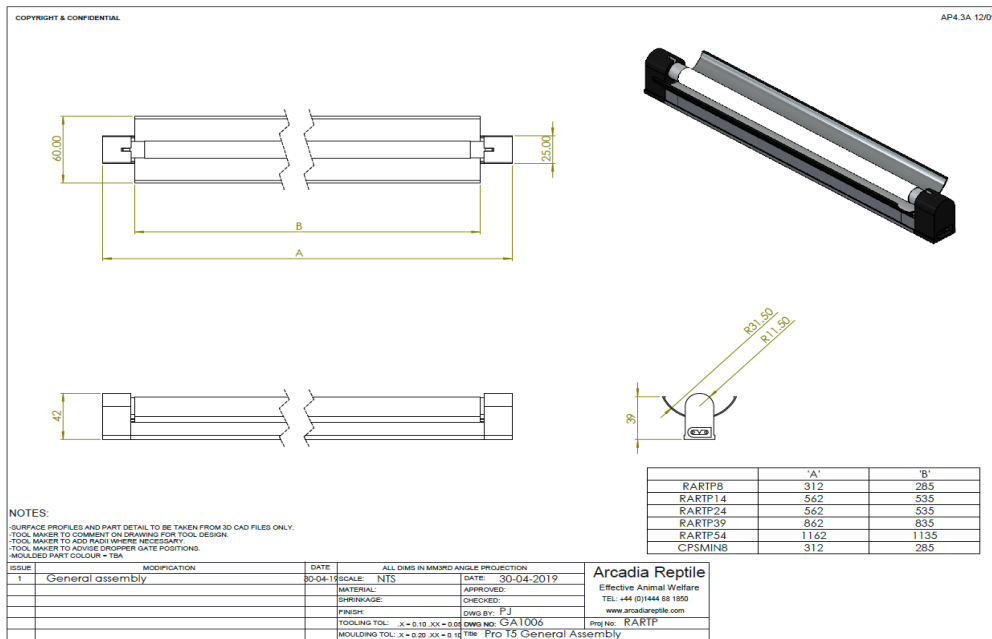






GENERAL DESCRIPTION - a version of the Arcadia ProT5 luminaire but with a lower 8W and 14W versions. The luminaire has an extruded aluminium body with plastic end caps with a clip on reflector. The luminaire is supplied with a 8W or 14W ShadeDweller UV fluorescent tube. Mains lead, link lead and mounting brackets are also supplied.

SPECIAL PRECAUTIONS

These tubes have a high light output, do not look directly at the tube when it is lit. Fluorescent tubes contain small amounts of mercury which would could be released if a tube is broken. The amount of mercury released would not be enough to pose a health risk to anyone immediately exposed but as a precautionary measure any room in which a tube breaks should be aired for 15 minutes. Do not use a vacuum cleaner or brush to remove debris as this risks further contamination. Wear disposable gloves. Carefully scoop up the larger bits of glass with a disposable piece of cardboard or similar. Use a piece of duct tape to pick up small pieces of glass and powder. Clean area with a paper towel. Seal all materials and cleaning equipment in a robust container and treat as hazardous waste. Thoroughly wash hands with soap and water. Dispose of in line with WEEE regulations.

LUMINAIRE DIMENSIONS



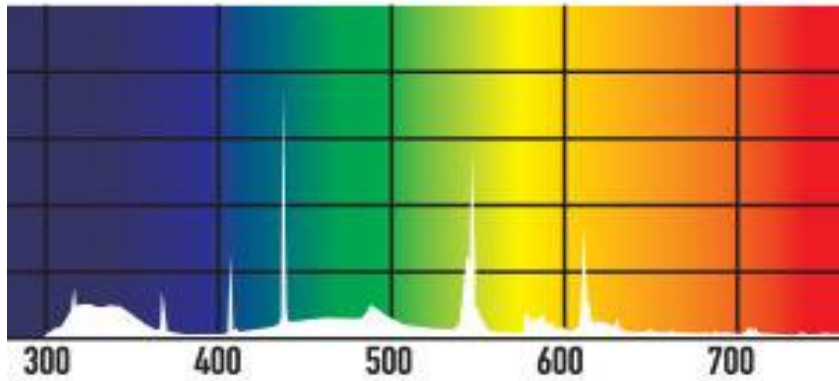
	ARCADIA REPTILE		
	PRODUCT DATA SHEET		
RARTP8S	SHADE DWELLER PRO T5		 





MEASUREMENTS (based on supplied lamps)

	Nominal wattage	Power usage	Lumens	Kelvin	UVA	UVB	UVI @ 250mm	UVI @ 450mm
	W	kWh /1000h	lm	K	%	%		
RARTP8S	8	9	400	6000	17	7.00	0.8	0.3
RARTPSA	8	9	400	5800	12	2.40	1.4	0.5
RARTP14S	14	15	858	7000	12	2.50	1.4	0.5

	Current 240V	Current 110V
	A	A
RARTP8S	0.106	0.107
RARTPSA	0.106	0.107
RARTP14S	0.207	0.208

COLOUR SPECTRAL CHART wavelength nm



	ARCADIA REPTILE	
	PRODUCT DATA SHEET	
RARTP8S	SHADE DWELLER PRO T5	 

COLOUR RENDER INDEX CHART

TEST EQUIPMENT

Power drawn	Everfine HAAS 1200 array spectroradiometer
Lumen output	Everfine HAAS 1200 array spectroradiometer
Colour temperature	Everfine HAAS 1200 array spectroradiometer
Lux	Iso-Tech Light Meter model 1335
PAR	Apogee PAR meter model MQ-500
UVA	Solarmeter UV Index model 6.5
UVB	Solarmeter UV Index model 6.5
UVC	Solarmeter UVC meter model 8.0
Energy eff. Calcs	EU reg 874/2012 Energy labelling of electrical lamps and luminaires

ADDITIONAL PARTS

HARMONISED STANDARDS

LVD	RoHS
EN60598-1:2015	EN50581:2012
EN62471:2008	
EN62493:2010	
EMC	
EN55015:2013	
EN61547:2009	
EN61000-3-2:2014	
EN61000-3-3:2013	