



ARCADIA REPTILE



PRODUCT DATA SHEET

CPSCLRK1

PURE SUN COMPACT KIT

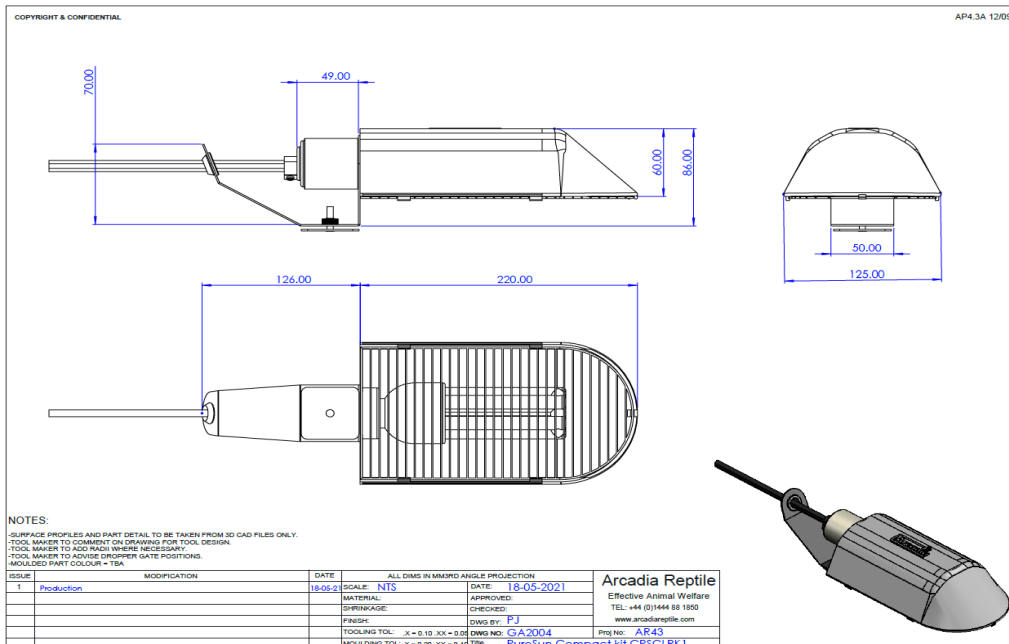






GENERAL DESCRIPTION - an effective compact fluorescent lighting fixture. The product consists of a mounting bracket with an attached reflector housing. A metal grille is provided to protect animals from coming into contact with the lamp when hot. A Pure Sun 20W compact lamp is supplied with the fitting.

SPECIAL PRECAUTIONS

These tubes have a high light output, do not look directly at the tube when it is lit. Fluorescent tubes contain small amounts of mercury which could be released if a tube is broken. The amount of mercury released would not be enough to pose a health risk to anyone immediately exposed but as a precautionary measure any room in which a tube breaks should be aired for 15 minutes. Do not use a vacuum cleaner or brush to remove debris as this risks further contamination. Wear disposable gloves. Carefully scoop up the larger bits of glass with a disposable piece of cardboard or similar. Use a piece of duct tape to pick up small pieces of glass and powder. Clean area with a paper towel. Seal all materials and cleaning equipment in a robust container and treat as hazardous waste. Thoroughly wash hands with soap and water. Dispose of in line with WEEE regulations.

LUMINAIRE DIMENSIONS

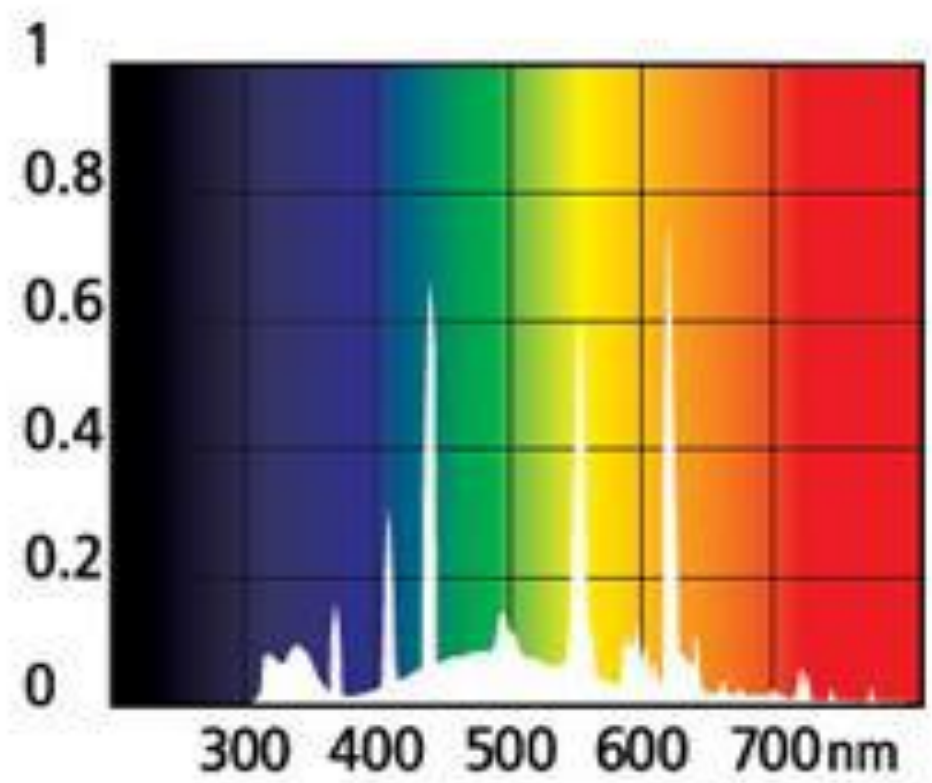






 Monkfield Reptile	ARCADIA REPTILE		 Arcadia
	PRODUCT DATA SHEET		
CPSCLRK1	PURE SUN COMPACT KIT		 

MEASUREMENTS (based on supplied lamp)

	Nominal wattage	Power usage	Rated power	Lumen output	UVA	UVB	Colour temp.
	W	kWh /1000h	W	lm	%	%	K
CPSCLRK1	20	17.3	17.3	690	2.4	30	5800

COLOUR SPECTRAL CHART wavelength nm



	ARCADIA REPTILE	
	PRODUCT DATA SHEET	
CPSCLRK1	PURE SUN COMPACT KIT	 

COLOUR RENDER INDEX CHART

峰值波长 Peak Wavelength: 544.9 nm

辐照度(距离 100 厘米) Irradiance(at 100 cm distance)

光照度 Illuminance: 54.912 lx

辐照度 Irradiance: 26.43 uW/cm²

254nm 辐照度 254nm-Irradiance:0.007 uW/cm²

A波段紫外辐照度 UVA-Irradiance:5.35 uW/cm²

B波段紫外辐照度 UVB-Irradiance:0.622 uW/cm²

C波段紫外辐照度 UVC-Irradiance:0.012 uW/cm²

A波段有效紫外辐照度 Effective UVA-Irradiance:0.003 uW/cm²

B波段有效紫外辐照度 Effective UVB-Irradiance:0.063 uW/cm²

C波段有效紫外辐照度 Effective UVC-Irradiance:0.008 uW/cm²

TEST EQUIPMENT

Power drawn	Everfine HAAS 1200 array spectroradiometer
Lumen output	Everfine HAAS 1200 array spectroradiometer
Colour temperature	Everfine HAAS 1200 array spectroradiometer
Lux	Iso-Tech Light Meter model 1335
PAR	Apogee PAR meter model MQ-500
UVA	Solarmeter UV Index model 6.5
UVB	Solarmeter UV Index model 6.5
UVC	Solarmeter UVC meter model 8.0
Energy eff. Calcs	EU reg 874/2012 Energy labelling of electrical lamps and luminaires

ADDITIONAL PARTS

HARMONISED STANDARDS

LVD	RoHS
EN60598-2-1:1998	EN50581:2012
EN60598-1:2001	
	EMC
	EN55015:2013
	EN61547:2009
	EN61000-3-2:2014
	EN61000-3-3:2013

