



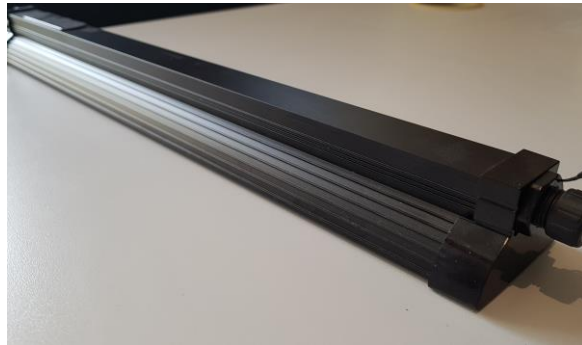
ARCADIA REPTILE



PRODUCT DATA SHEET

RARLJ

LUMENIZE LED

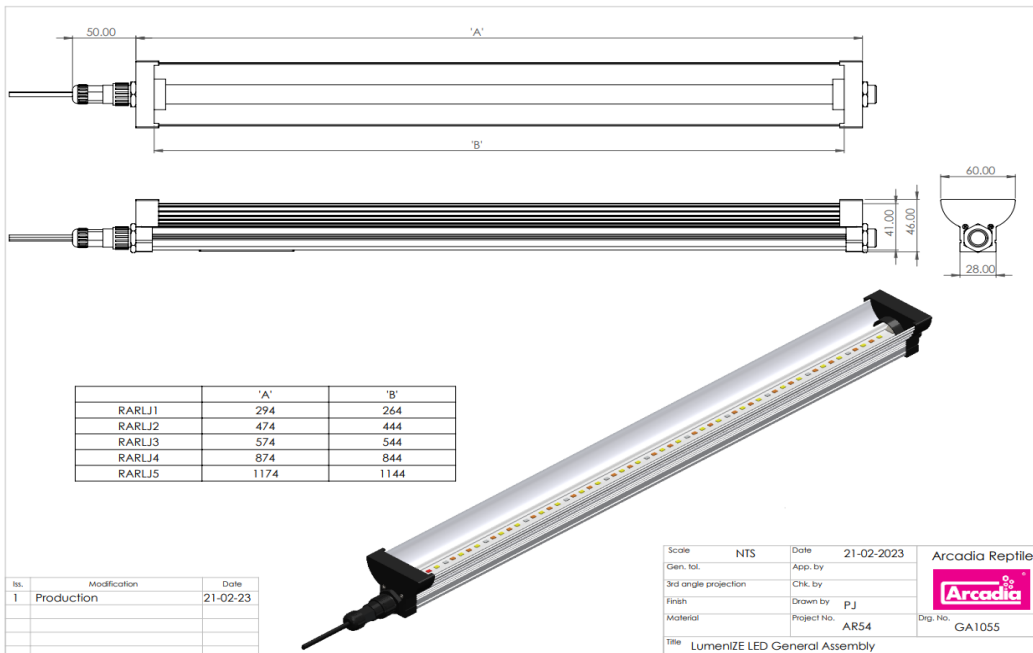


GENERAL DESCRIPTION - Arcadia LumenIZE LED Bars of various wattages. These luminaires are dimmable via bluetooth and app control. The app allows programming of light levels and dimming times. The luminaire is IP65 waterproof. The luminaire has an aluminium body with plastic end caps and a built in reflector. The luminaire is fitted with three rows of closely spaced LED diodes. Clip mountings, mains and link cables included

SPECIAL PRECAUTIONS

This product has been designed for use in terraria/aviculture only. Product not suitable for household lighting. These lamps have a high light output, do not look directly at the lamp when it is lit. These lamps can get very hot, turn off power before carrying out maintenance. Dispose of in line with WEEE regulations.

LUMINAIRE DIMENSIONS



ARCADIA REPTILE



RARLJ

LUMENIZE LED

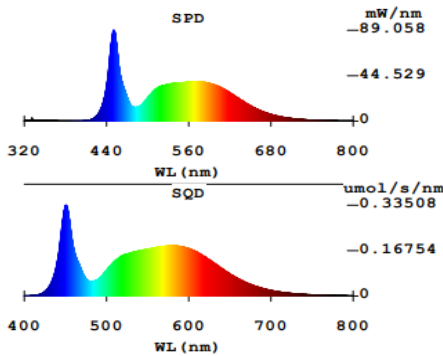


MEASUREMENTS (based on supplied lamps)

	Nominal wattage	Power usage	Kelvin	Lumens	Lumens/Watt	Energy rating		
	W	kWh /1000h	K	lm	lm/W			
RARLJ1	17	17	5944	2462	145	C		
RARLJ2	23	23	6011	3457	150	D		
RARLJ3	38	38	6011	5761	152	C		
RARLJ4	53	53	6038	8107	153	C		
RARLJ5	76	76	6013	11569	152	C		

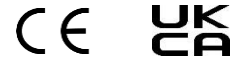
	kLux @ 100mm	kLux @ 450mm	PAR @ 100mm	PAR @ 450mm	CRI			
	kLux	klux	$\mu\text{mol m}^{-2} \text{s}^{-1}$	$\mu\text{mol m}^{-2} \text{s}^{-1}$				
RARLJ1	30	18.2	668	408	85			
RARLJ2	27.5	18.8	640	417	85			
RARLJ3	38	24.8	816	570	85			
RARLJ4	38.4	25	830	580	85			
RARLJ5	36.3	24	812	588	85			

COLOUR SPECTRAL CHART wavelength nm

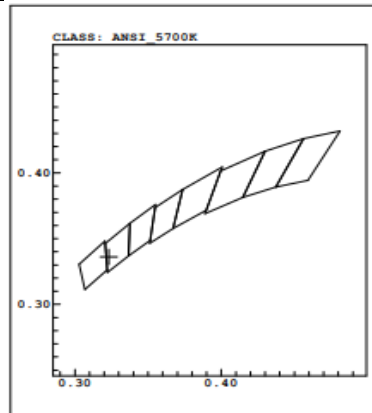


RARLJ

LUMENIZE LED



COLOUR RENDER INDEX CHART



TEST EQUIPMENT

Power drawn	Everfine HAAS 1200 array spectroradiometer
Lumen output	Everfine HAAS 1200 array spectroradiometer
Colour temperature	Everfine HAAS 1200 array spectroradiometer
Lux	Iso-Tech Light Meter model 1335
PAR	Apogee PAR meter model MQ-500
UVA	Solarmeter UV Index model 6.5
UVB	Solarmeter UV Index model 6.5
UVC	Solarmeter UVC meter model 8.0
Energy eff. Calcs	EU reg 874/2012 Energy labelling of electrical lamps and luminaires

ADDITIONAL PARTS

HARMONISED STANDARDS

LVD	RoHS
EN60598-1:2021	IEC62321-4:2013+A1:2017
EN60598-2-4:2018	IEC62321-5:2013
EMC	IEC62321-7-1:2015
EN55015:2019+A11:2020	IEC62321-7-2:2017
EN61547:2009	IEC62321-6:2015
EN61000-3-2:2019+A1:2021	IEC62321-8:2017
EN61000-3-3:2013+A1:2019	