

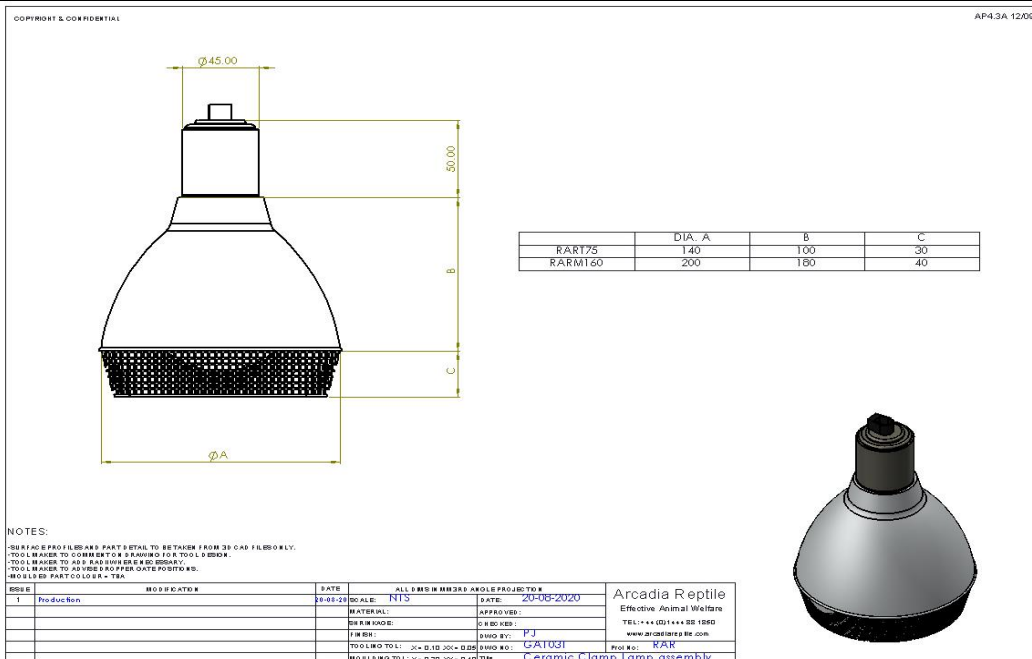






GENERAL DESCRIPTION - a range of deep domed aluminium reflectors with an E27 ceramic lampholder for light and heat lamps. There are plain aluminium or graphite finish versions. The product is supplied with a clamp mount and a screw fixed bracket. A mesh grille is also provided.

SPECIAL PRECAUTIONS

Do not look directly into the light source. Heat lamps should be regulated with a thermostat. The mesh grille should be fitted to protect animals that could access the lamp. Follow all instructions provided.

LUMINAIRE DIMENSIONS







	ARCADIA REPTILE						
	PRODUCT DATA SHEET						
RAR	CERAMIC CLAMP LAMP						 

MEASUREMENTS (based on supplied lamps)

	Maximum wattage							
	W							
RART75	150							
RARM160	250							
RART75G	150							
RARM160G	250							

COLOUR SPECTRAL CHART wavelength nm

	ARCADIA REPTILE	
	PRODUCT DATA SHEET	
RAR	CERAMIC CLAMP LAMP	 

COLOUR RENDER INDEX CHART

TEST EQUIPMENT

Power drawn	Everfine HAAS 1200 array spectroradiometer
Lumen output	Everfine HAAS 1200 array spectroradiometer
Colour temperature	Everfine HAAS 1200 array spectroradiometer
Lux	Iso-Tech Light Meter model 1335
PAR	Apogee PAR meter model MQ-500
UVA	Solarmeter UV Index model 6.5
UVB	Solarmeter UV Index model 6.5
UVC	Solarmeter UVC meter model 8.0
Energy eff. Calcs	EU reg 874/2012 Energy labelling of electrical lamps and luminaires

ADDITIONAL PARTS

HARMONISED STANDARDS

LVD	RoHS
EN60598-1:2015	EN50581:2012
EN60598-2-4:1998	