


 MonkfieldReptile	ARCADIA REPTILE	 Arcadia
	PRODUCT DATA SHEET	
RSBCH	CERAMIC HEATER	 

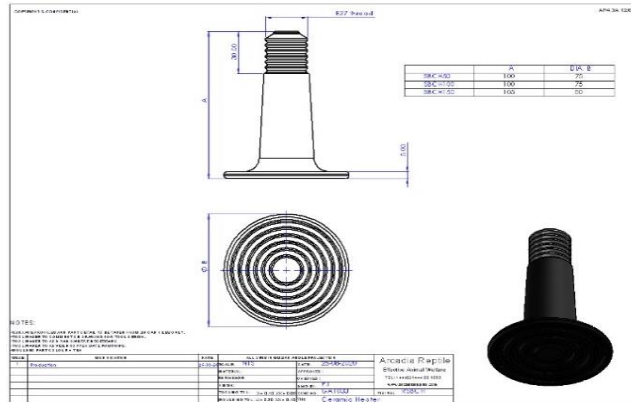


GENERAL DESCRIPTION - a range of ceramic Infrared heaters. Ceramic body with E27 screw fitting.



SPECIAL PRECAUTIONS

Use with a thermostat. Switch off the lamp and allow it to cool before handling. Dispose of in line with WEEE regulations.

LAMP DIMENSIONS







	A mm	B mm		
RSBCH50	100	75		
RSBCH100	100	75		
RSBCH150	105	80		

 Monkfield Reptile	ARCADIA REPTILE				
	PRODUCT DATA SHEET				
RSBCH	CERAMIC HEATER				 

MEASUREMENTS

	Temp @ 150mm	Temp @ 200mm	Temp @ 300mm	Temp @ 400mm	Nominal wattge	
	Deg. C	Deg. C	Deg. C	Deg. C	W	
RSBCH50	58	47	36	30	50.00	
RSBCH100	65	50	40	38	100.00	
RSBCH150	71	52	42	40	150.00	

COLOUR SPECTRAL CHART wavelength nm

	ARCADIA REPTILE	
	PRODUCT DATA SHEET	
RSBCH	CERAMIC HEATER	 

COLOUR RENDER INDEX CHART

TEST EQUIPMENT

Power drawn	Everfine HAAS 1200 array spectroradiometer
Lumen output	Everfine HAAS 1200 array spectroradiometer
Colour temperature	Everfine HAAS 1200 array spectroradiometer
Lux	Iso-Tech Light Meter model 1335
PAR	Apogee PAR meter model MQ-500
UVA	Solarmeter UV Index model 6.5
UVB	Solarmeter UV Index model 6.5
UVC	Solarmeter UVC meter model 8.0
Energy eff. Calcs	EU reg 874/2012 Energy labelling of electrical lamps and luminaires
Temperature	FLIR laser thermometer TG165

ADDITIONAL PARTS

HARMONISED STANDARDS

EMC	RoHS
EN55015:2013	EN50581:2012
EN61547:2009	
EN61000-3-2:2014	
EN61000-3-3:2013	