



ARCADIA REPTILE



PRODUCT DATA SHEET

RARTZ

ThermalZoo Pro

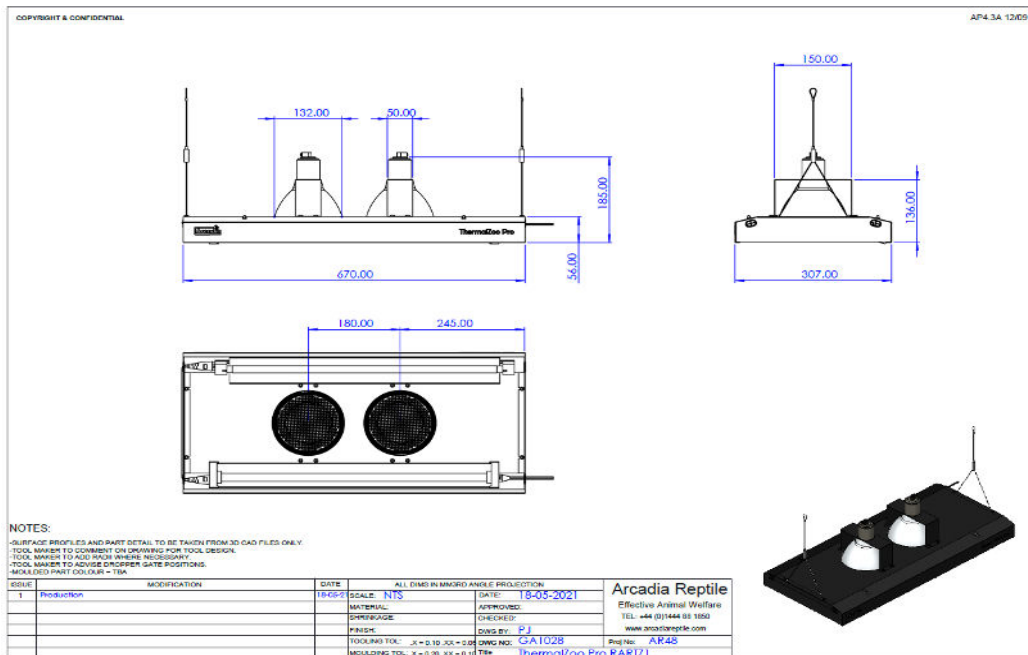






GENERAL DESCRIPTION - a range of hybrid light and heat fittings. The unit can be fitted with combinations of Pro T5 and JD LED Bar lights. The unit can also be supplied with a variety of heat lamps. The fitting has been designed for commercial use in Zoos but can also be used in large domestic vivariums.

SPECIAL PRECAUTIONS

These tubes have a high light output, do not look directly at the tube when it is lit. Fluorescent tubes contain small amounts of mercury which would could be released if a tube is broken. The amount of mercury released would not be enough to pose a health risk to anyone immediately exposed but as a precautionary measure any room in which a tube breaks should be aired for 15 minutes. Do not use a vacuum cleaner or brush to remove debris as this risks further contamination. Wear disposable gloves. Carefully scoop up the larger bits of glass with a disposable piece of cardboard or similar. Use a piece of duct tape to pick up small pieces of glass and powder. Clean area with a paper towel. Seal all materials and cleaning equipment in a robust container and treat as hazardous waste. Thoroughly wash hands with soap and water. Dispose of in line with WEEE regulations.

LUMINAIRE DIMENSIONS







| | | | | | | | |
|---|--------------------|--|--|--|--|--|---|
|  | ARCADIA REPTILE | | | | | |  |
| | PRODUCT DATA SHEET | | | | | | |
| RARTZ | ThermalZoo Pro | | | | | |   |

MEASUREMENTS (based on supplied lamps)

| | Nominal wattage | Power usage | Energy rating | Kelvin | UVA | UVB | UVI @ 300mm | UVI @ 600mm | |
|--------|--|-------------|---------------|--------|-----|-----|-------------|-------------|--|
| | W | kWh /1000h | | K | % | % | | | |
| RARTZ1 | See PDS for Pro T5 and JD LED Bar as well as individual heat lamps | | | | | | | | |
| RARTZ2 | See PDS for Pro T5 and JD LED Bar as well as individual heat lamps | | | | | | | | |
| | | | | | | | | | |
| | | | | | | | | | |
| | | | | | | | | | |
| | | | | | | | | | |
| | | | | | | | | | |
| | | | | | | | | | |
| | | | | | | | | | |
| | | | | | | | | | |
| | | | | | | | | | |

COLOUR SPECTRAL CHART wavelength nm

See PDS for Pro T5 and JD LED Bar as well as individual heat lamps

| | | |
|--|-----------------------|---|
|  MonkfieldReptile | ARCADIA REPTILE |  |
| | PRODUCT DATA SHEET | |
| RARTZ | ThermalZoo Pro |   |

| |
|---------------------------|
| COLOUR RENDER INDEX CHART |
|---------------------------|

| |
|----------------|
| TEST EQUIPMENT |
|----------------|

| | |
|--------------------|---|
| Power drawn | Everfine HAAS 1200 array spectroradiometer |
| Lumen output | Everfine HAAS 1200 array spectroradiometer |
| Colour temperature | Everfine HAAS 1200 array spectroradiometer |
| Lux | Iso-Tech Light Meter model 1335 |
| PAR | Apogee PAR meter model MQ-500 |
| UVA | Solarmeter UV Index model 6.5 |
| UVB | Solarmeter UV Index model 6.5 |
| UVC | Solarmeter UVC meter model 8.0 |
| Energy eff. Calcs | EU reg 874/2012 Energy labelling of electrical lamps and luminaires |

| |
|------------------|
| ADDITIONAL PARTS |
|------------------|

| |
|----------------------|
| HARMONISED STANDARDS |
|----------------------|

| | |
|------------------|--------------|
| LVD | RoHS |
| EN60598-1:2015 | EN50581:2012 |
| EN62471:2008 | |
| EN62493:2010 | |
| EMC | |
| EN55015:2013 | |
| EN61547:2009 | |
| EN61000-3-2:2014 | |
| EN61000-3-3:2013 | |