

RSBF

BASKING SOLAR FLOODLIGHT

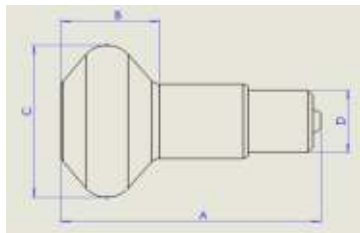


GENERAL DESCRIPTION - a range of incandescent basking lamps with E27 fittings. These lamps will raise the ambient temperature of the vivarium while providing good levels of UVA.

SPECIAL PRECAUTIONS

These lamps have a high light output, do not look directly at the tube when it is lit. Switch off the lamp and allow it to cool before handling. Dispose of in line with WEEE regulations. This product has been designed for use in terraria/aviculture only. Product not suitable for household lighting.

LAMP DIMENSIONS



	"A" mm	"B" mm	"C" mm	"D" mm
RSBF50	94	35	63	E27
RSBF75	107	55	80	E27
RSBF100	107	55	80	E27
RSBF150	124	55	96	E27

RSBF

BASKING SOLAR FLOODLIGHT

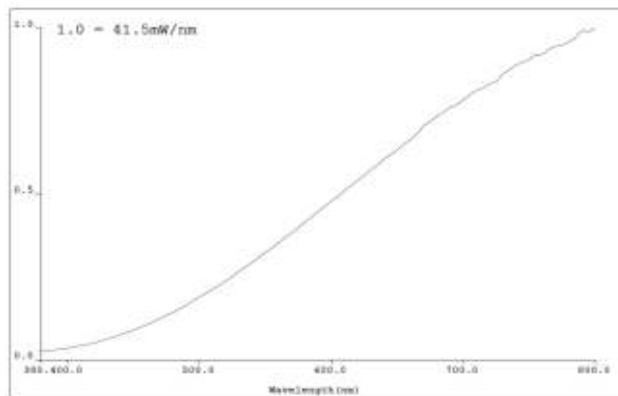


MEASUREMENTS

	Nominal wattage	Rated Power	Power usage	Lumen output	Lumens per watt	Energy rating
	W	W	kWh/1000h	lm	lm/W	
RSBF50	50	51.6	51.6	375.3	7.27	E
RSBF75	75	75.6	75.6	503.99	6.67	E
RSBF100	100	103	103	735.46	7.14	E
RSBF150	150	148	148	1091.7	7.38	E

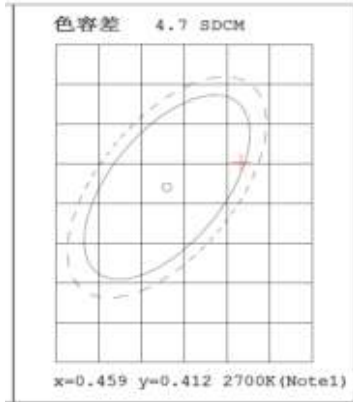
	Colour temp.	Lux @ 200mm	Lux @ 400mm	PAR @ 200mm	PAR @ 400mm	UVA	UVB	UVC
	K	lx	lx	m ⁻² s ⁻¹	m ⁻² s ⁻¹	%	%	%
RSBF50	3200							
RSBF75	3200							
RSBF100	3200							
RSBF150	3200							

COLOUR SPECTRAL CHART wavelength nm



RSBF	BASKING SOLAR FLOODLIGHT	CE UK PA
------	--------------------------	----------

COLOUR RENDER INDEX CHART



TEST EQUIPMENT

Power drawn	Everfine HAAS 1200 array spectroradiometer
Lumen output	Everfine HAAS 1200 array spectroradiometer
Colour temperature	Everfine HAAS 1200 array spectroradiometer
Lux	Iso-Tech Light Meter model 1335
PAR	Apogee PAR meter model MQ-500
UVA	Solarmeter UV Index model 6.5
UVB	Solarmeter UV Index model 6.5
UVC	Solarmeter UVC meter model 8.0
Energy eff. Calcs	EU reg 874/2012 Energy labelling of electrical lamps and luminaires

ADDITIONAL PARTS

HARMONISED STANDARDS

LVD	EMC
EN60335-1:2012 +A11:2013 +A13:2017	IEC62321-3-1:2013
EN62233:2008	IEC62321-4:2013
	IEC62321-7-2:2017
RoHS	IEC62321-6:2015
EN50581:2012	IEC62321-5:2013