



ARCADIA REPTILE



PRODUCT DATA SHEET

RARHP

DEEP HEAT PROJECTOR

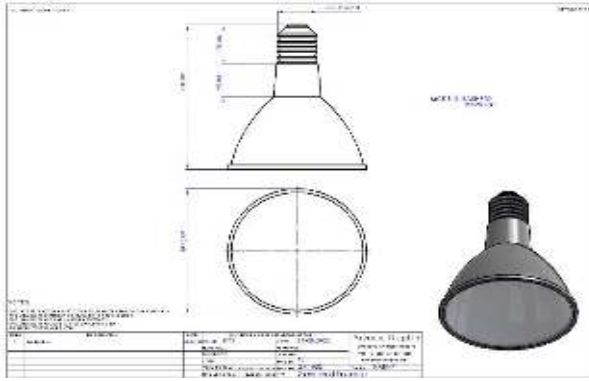


GENERAL DESCRIPTION - a range of Infra red heat projectors. Glass shell with a thick internal reflector. E27 screw fitting.





SPECIAL PRECAUTIONS

This product has been designed for use in terraria/aviculture only. Product not suitable for household lighting. Do not look directly at the heat source. Use with a thermostat. Switch off the lamp and allow it to cool before handling. Dispose of in line with WEEE regulations.

LAMP DIMENSIONS



|         |  |  |  |  |
|---------|--|--|--|--|
| RARHP50 |  |  |  |  |
| RARHP80 |  |  |  |  |
|         |  |  |  |  |
|         |  |  |  |  |
|         |  |  |  |  |





|   |                            |  |  |  |  |   |
|---|----------------------------|--|--|--|--|---|
|  | ARCADIA REPTILE            |  |  |  |  |    |
|   | PRODUCT DATA SHEET         |  |  |  |  |   |
| <b>RARHP</b>  | <b>DEEP HEAT PROJECTOR</b> |  |  |  |  |   |

MEASUREMENTS

|         | Temp @<br>150mm | Temp @<br>200mm | Temp @<br>300mm | Temp @<br>400mm | Nominal<br>wattage | Current<br>amps |
|---------|-----------------|-----------------|-----------------|-----------------|--------------------|-----------------|
|         | Deg. C          | Deg. C          | Deg. C          | Deg. C          | W                  | A               |
| RARHP50 | 55              | 45              | 36              | 29              | 50.00              | 0.22            |
| RARHP80 | 62              | 51              | 44              | 36              | 80.00              | 0.34            |
|         |                 |                 |                 |                 |                    |                 |
|         |                 |                 |                 |                 |                    |                 |
|         |                 |                 |                 |                 |                    |                 |
|         |                 |                 |                 |                 |                    |                 |
|         |                 |                 |                 |                 |                    |                 |
|         |                 |                 |                 |                 |                    |                 |
|         |                 |                 |                 |                 |                    |                 |
|         |                 |                 |                 |                 |                    |                 |

|          | Mains<br>voltage | Nominal<br>wattage | Current<br>amps |  |  |  |  |  |
|----------|------------------|--------------------|-----------------|--|--|--|--|--|
|          | V                | W                  | A               |  |  |  |  |  |
| RARHP50  | 240              | 50.00              | 0.22            |  |  |  |  |  |
| RARHP80  | 240              | 80.00              | 0.34            |  |  |  |  |  |
| RARHP50X | 240              | 50.00              | 0.22            |  |  |  |  |  |
| RARHP80X | 240              | 80.00              | 0.34            |  |  |  |  |  |
|          |                  |                    |                 |  |  |  |  |  |
|          |                  |                    |                 |  |  |  |  |  |
|          |                  |                    |                 |  |  |  |  |  |
|          |                  |                    |                 |  |  |  |  |  |
|          |                  |                    |                 |  |  |  |  |  |

COLOUR SPECTRAL CHART wavelength nm

|   |                     |   |
|---|---------------------|---|
|  | ARCADIA REPTILE     |    |
|   | PRODUCT DATA SHEET  |   |
| RARHP   | DEEP HEAT PROJECTOR |   |

|                           |
|---------------------------|
| COLOUR RENDER INDEX CHART |
|---------------------------|

|                |
|----------------|
| TEST EQUIPMENT |
|----------------|

|                    |   |
|--------------------|---|
| Power drawn        | Everfine HAAS 1200 array spectroradiometer                          |
| Lumen output       | Everfine HAAS 1200 array spectroradiometer                          |
| Colour temperature | Everfine HAAS 1200 array spectroradiometer                          |
| Lux                | Iso-Tech Light Meter model 1335                                     |
| PAR                | Apogee PAR meter model MQ-500                                       |
| UVA                | Solarmeter UV Index model 6.5                                       |
| UVB                | Solarmeter UV Index model 6.5                                       |
| UVC                | Solarmeter UVC meter model 8.0                                      |
| Energy eff. Calcs  | EU reg 874/2012 Energy labelling of electrical lamps and luminaires |
| Temperature        | FLIR laser thermometer TG165  |

|                  |
|------------------|
| ADDITIONAL PARTS |
|------------------|

|                      |
|----------------------|
| HARMONISED STANDARDS |
|----------------------|

|                  |                   |
|------------------|-------------------|
| EMC              | RoHS              |
| EN 55015:2013    | IEC62321-3-1:2013 |
| EN61547:2009     | IEC62321-4:2013   |
| EN61000-3-2:2014 | IEC62321-7-2:2017 |
| EN61000-3-3:2013 | IEC62321-6:2015   |
|                  | IEC62321-5:2013   |